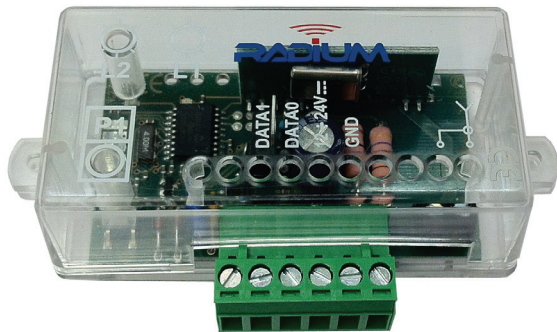



www.cdvi.ca


WRW

Wireless Receiver with wiegand output



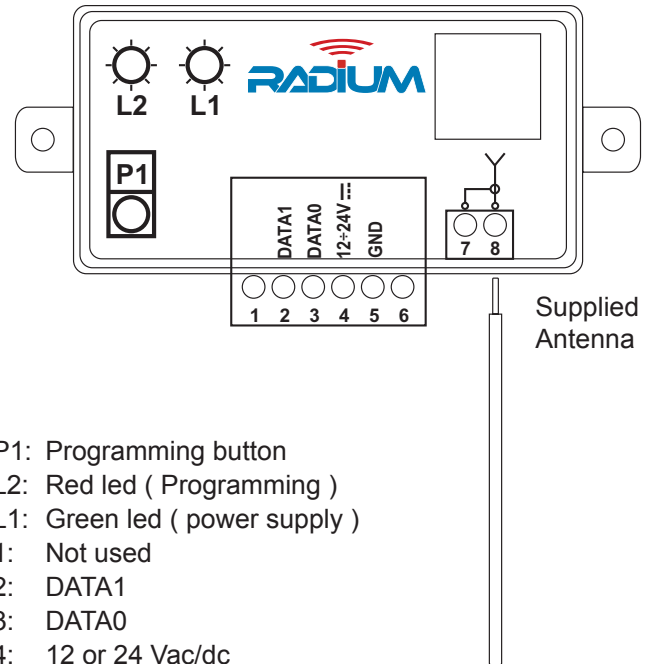
RECEIVER INTRODUCTION

The receiver WRW is a superheterodyne receiver operating at 433,92 Mhz in AM/ASK. It is composed by a main board in which there are the power supply output connectors and by a RF card. The two outputs have an open drain configuration with output signal in "Wiegand 26 bit format". The appliance is housed in an indoor enclosure.

SPECIFICATIONS

| | |
|-------------------------------|------------------|
| Receiver type: | Superheterodyne |
| Operating frequency: | 433,92 MHz |
| Power supply : | 12 or 24 Vac/dc |
| Current consumption: | 24 mA |
| Output type | Wiegand 26-bit |
| Operating temperature: | -20 to +70 °C |
| Dimensions: | 105 x 45 x 28 mm |
| Weight: | 65 g |

TERMINAL CONNECTIONS



- P1: Programming button
- L2: Red led (Programming)
- L1: Green led (power supply)
- 1: Not used
- 2: DATA1
- 3: DATA0
- 4: 12 or 24 Vac/dc
- 5: GND
- 6: Not used
- 7: Antenna Shield
(used for SEA433 tuned antenna)
- 8: Antenna Core

COMPATIBLE REMOTES



R1

1-Button Remote



R2

2-Button Remote



R4

4-Button Remote

Also available with CDVI or HID built-in proximity badge

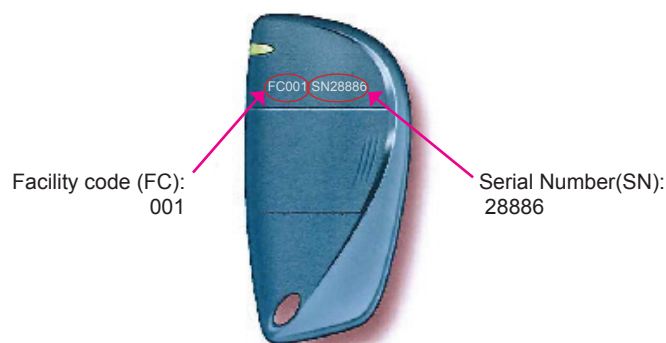
OPERATION

The information contained in the frame sent by a remote is mainly composed by 4 main parameters: **Manufacturer Key, Serial Number, Facility code and Button type**. The receiver accepts only remotes having the right Manufacturer Key. Once initialized, it sends out in wiegand format the Serial Number and the Facility code of the remotes. No information of the button pressed is present in the wiegand signal.

NOTE : No wiegand signal is carried out from the receiver unless a initialization procedure is performed.

The receiver is capable to store up to 50 different combinations: "Facility code - Button type". The button type of each remote can be A, B, C, D. Combinations of this type can be, for example: 001-A, 001-B, 002-B, 003-B, 010-D, where 002 is the Facility code and B is the remote button and so on. Combinations as A+B or C+D are not allowed.

FACILITY CODE AND SERIAL NUMBER LOCATION



| FACILITY CODE (FC)=001 | | | |
|--|---|---|---|
| A | B | C | D |
| Serial Number = 28886 | | | |
| The maximum remote (serial number) depends on the access control system capacity | | | |



REMOTE BUTTON PROGRAMMING

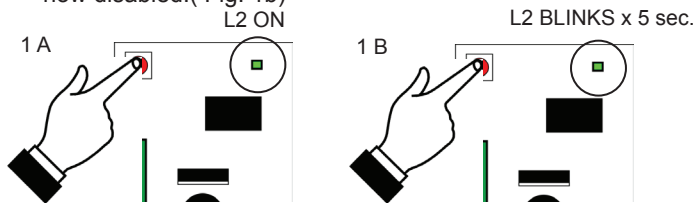
- 1) Press P1 until L2 LED turns ON
- 2) Press a remote key button
- 3) The L2 LED turns off and then makes a short flash. Any operation not allowed (memorization with full memory, memorization of already stored codes) will cause 2 quick flashes of L2 LED.

DISABLING FACILITY CODE VERIFICATION

When disabling facility code verification, the receiver will accept any facility code and maintains the check on the key button.

Do the following to disable facility code verification:

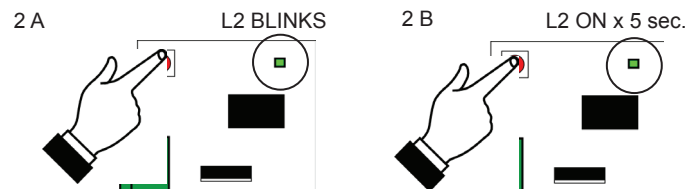
- 1) Press P1 button until the L2 LED turns on and then release it (Fig. 1a).
- 2) Within 1 sec. press P1 again. At this point the L2 LED starts to blink for 5 sec. then switches off . Facility code verification is now disabled.(Fig. 1b)



RESTORING FACILITY CODE VERIFICATION

Do the following to restore the facility code verification:

- 1) Press P1 button until the L2 LED turns on and starts to blink then release it (Fig. 2a)
- 2) Within 1 sec. press P1 again. At this point the L2 LED comes back steady for 5 sec. then switches off (Fig. 2b). Facility code verification enabled.



NOTE : The above Facility code verification can be disabled or restored only if the receiver has been initialized, that means unless one remote button has been authorized.

LED INDICATORS

A 1 second flash of L2 indicates a valid signal reception. A quick flash of L2 indicates an invalid signal reception

MEMORY RESET (FACTORY DEFAULT)

The procedure allows to erase the receiver memory

- 1) Press **P1** until **L2** LED turns on.
- 2) Release **P1** and then press it again until L2 LED starts to flash 3 times

At this point all settings are erased and the receiver is reset to factory default.

IMPORTANT



Receiver location is crucial for optimal system performance. Place the receiver far from interference sources such as magnetic fields or radio emissions (neon ballasts, electric motors, etc.). Ensure quality signal reception by doing range tests before permanently mounting the receiver.

WARRANTY

The warranty period for this product is 60 months, beginning from the manufacturer date. During this period, if the product does not work correctly, due to a defective component, the product will be repaired or substituted at our discretion. The guarantee does not cover the plastic container integrity. After-sale service is supplied at the factory.

MANUFACTURED BY CDVI WIRELESS - ITALY