



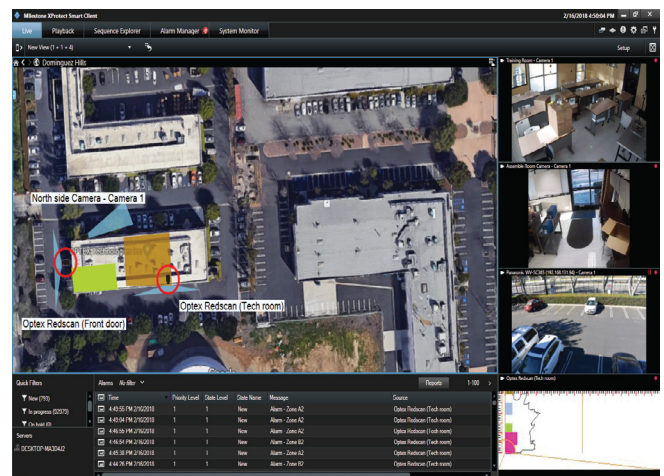
iSeries IP Receiver



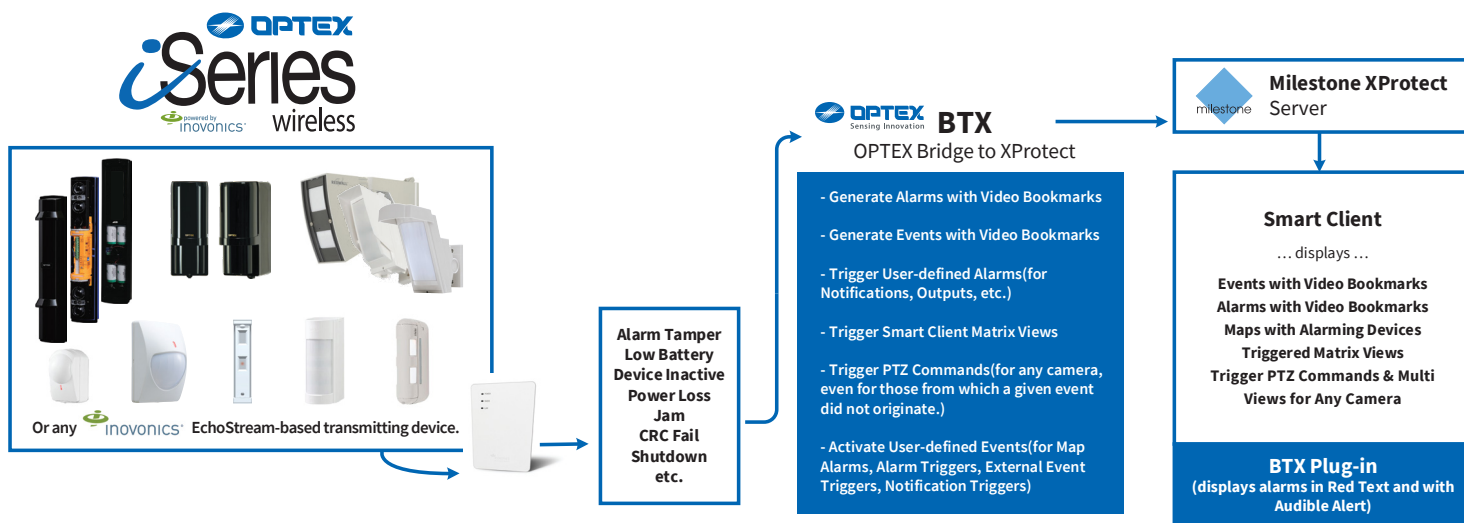
The EN6080-OP IP Receiver & BTX software bundle connects OPTEx's iSeries Wireless Detectors to an IP network, allowing connection to Milestone XProtect video management software using the OPTEx plugin software. This includes OPTEx iSeries long & short range active infrared photobeams and PIR detectors, allowing full control through Milestone, including mapping, event tags & filters, and full device control, without a traditional alarm panel.

Product Features

- Generate Alarms & Events with Video Bookmarks
- Trigger User-defined Alarms(for Notifications, Outputs, etc.)
- Trigger PTZ Commands & Multi Views for Any Camera
- Five day battery backup of critical data
- Continues to log up to 3000 events even when connection to the system controller is lost
- Includes wall and housing tamper
- System status LED allow network health to be viewed at a glance
- Web browser home screen provides a snapshot view of end devices, including registered device, alarm and status information



iSeries IP Receiver (EN6080-OP)



Product Specifications

Dimensions:	5.25" x 6.75" x 1.25"
Power requirement:	12-24 VDC/AC; 500 mA
Power over Ethernet:	IEEE 802.3at-2009 compliant
Interface:	10/100 Base-T Ethernet
Web browser requirements:	Mozilla® Firefox® version 35 or later; Internet Explorer® version 11 or later
Event log size:	Up to 3000 alarm, trouble and system events
Number of devices supported:	Up to 3000 end devices; up to 500 repeaters*
Operating environment:	
Temperature:	-4 to 140°F
Humidity:	Up to 90% (non-condensing)
Market:	North America
EchoStream® frequency:	902-928 MHz, frequency hopping spread spectrum
Regulatory compliance:	FCC, RoHS, UL 2560 Unlisted Component Certification

* Performance is a function of many variables, including repeater layout, device type and quantity, as well as the structure and environment in which the network operates. Please contact your OPTEX representative for guidance.

• Continual enhancements to our products may cause specifications to change without notice.

EN6080-OP Area Control Gateway Home Screen Example



Monday February 10, 2013 4:22:59 PM

System Connection Summary

Devices Registered	Devices in Alarm	Devices Inactive
503	0	0

TX ID	Device Status	Alarm State	Type	Description	Partitions
1000001	Active	OK	Encoder Repeater	Encoder Repeater	
1000002	Active	OK	EN12210 Perimeter	Perimeter 422	16
1000003	Active	OK	EN12210 Perimeter	Perimeter 703	2, 3, 5, 6
400	Active	OK	EN12210	Load Element 400	
401	Active	OK	EN12210	Load Element 401	
402	Active	OK	EN12210	Load Element 402	
403	Active	OK	EN12210	Load Element 403	
404	Active	OK	EN12210	Load Element 404	
405	Active	OK	EN12210	Load Element 405	
406	Active	OK	EN12210	Load Element 406	
407	Active	OK	EN12210	Load Element 407	
408	Active	OK	EN12210	Load Element 408	
409	Active	OK	EN12210	Load Element 409	
410	Active	OK	EN12210	Load Element 410	

The EN6080-OP web browser home screen provides a snapshot view of end devices, including registered device, alarm and status information. From the home screen the following are available:

- IP Receiver Setup
- Wireless Setup
- Partitions
- Device Setup
- Logs
- File Management