

Wide 2-wire compatibility

Sensitivity testing built-in

CleanMe® maintenance alert system

GE Security
Fire & Life Safety

ESL Smoke Detector Compatibility Index



imagination at work



INTRODUCTION

The ESL Detector Compatibility Index has been compiled in order to provide you with a simple cross reference of the many compatibility listings that ESL or the panel manufacturers have obtained. Underwriters Laboratories, Inc. has confirmed that the ESL, UL-Listed Fire Sensors are electrically compatible with the UL-Listed Control Units as shown in the tables.

The Index is organized alphabetically by control unit manufacturer. Each manufacturer's listing specifies a control unit, the applicable loop style (formerly Class A or B wiring), the control unit compatibility identification, the maximum number of ESL detectors allowable per initiating circuit and the ESL Compatibility Identifier.

To use this index:

- First, look up the control unit and determine the ESL Compatibility Identifier.
- Next, turn to the Identifier Cross Reference List to determine the ESL detectors (and Bases) which are compatible.
- We have provided the Identifier Cross Reference List sorted by both Identifier Number and Detector Model Number for your convenience.

This listing should provide you with all the information you require for determination of compatibility. It should also be sufficient information to answer any questions raised by the AHJ (Authority Having Jurisdiction) on any projects. Please have the name of the control unit manufacturer and control unit description handy when you call Technical Services at 1-800-648-7424, so we can provide you with the correct information.

Fire Sensors and Control Units and their compatibility are subject to change without notice.

ESL has made every attempt to provide complete, accurate and up-to-date information. We are not responsible for omissions or errors. If you would like ESL to add a new panel to its compatibility listings, please contact ESL Marketing at 1-800-547-2556. Please have the name of the control unit manufacturer and control unit description handy when you call.

Note on Four-Wire Detectors:

Four-Wire Detector Compatibility listings are not required by UL, therefore no Four-Wire Detectors are included in the compatibility index. A Four-Wire Detector is considered compatible if the voltage range of the detector equals or exceeds the voltage range of the control panel power supply, and if sufficient current is available to insure the operation of all detectors.

Note on Carbon Monoxide Detectors:

Carbon Monoxide compatibility listings are not required by UL, therefore no Carbon Monoxide Detectors are included in the compatibility index. A Carbon Monoxide Detector is considered compatible if the voltage range of the detector equals or exceeds the voltage range of the control panel power supply, and if sufficient current is available to insure the operation of all detectors.

ESL 505 Module

CleanMe™ Interpreter and 2 to 4-Wire Input Converter Module



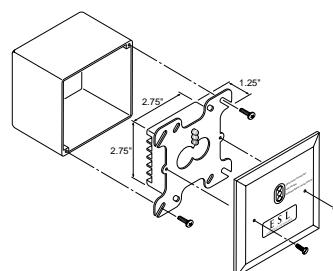
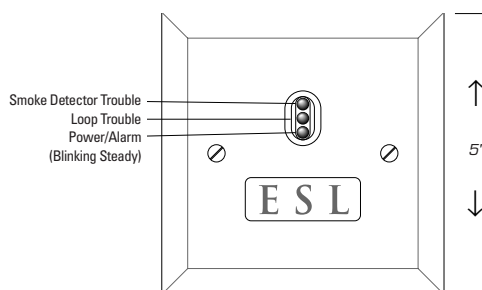
- The 505 Module serves as an interface between the ESL 521 Series smoke detector and any UL Listed 12/24V DC control panel:*
- Interprets 521 CleanMe™ signal for any panel
- Allows central station to be notified when detector needs to be cleaned
- Converts any current ESL 2-wire smoke detector to 4-wire inputs of any panel
- 3 diagnostic LEDs
- Ensures 2-wire compatibility with any control panel



California State Fire Marshal Approved

Specifications

Operation Voltage	12V-33V DC
Standby Current	15mA +/- 10%
Alarm Current	50mA +/- 10%
Form A contacts	500mA @ 36V DC (resistive)
Form C contacts	2 Amps @ 28V DC or 120V DC (resistive)
Number of detectors/module	20
Operating Temperature	-20°C to 55° C
Humidity	0-95% non-condensing
RFI Immunity	20V/M @ 0-1 ghz
Static Immunity	25,000 V
Transient Immunity	2,500 V @ 1.5J
Color	white/white
Mounting	Mountable to 4" square, double gang boxes
Material	Flame retardant plastic cover (UL-94V-0)
Field wiring size	12-24 AWG



Ordering Information

Model Number	Description
505	Module that interprets the 521's CleanMe™ signal for any panel and can convert 2-wire 521 Series detectors to 4-wire inputs on these panels

CleanMe™ is a trademark of GE Security and is protected under the following U.S. Patent No.: 5,708,414.

*CleanMe™ Compatible control panels that do not require use of the 505 module:

- ADVENT (GE Security) Panels**
- DMPXR10**
- DMP XR20**
- DMP XR200**
- DMP XR5FL/XR5SL**
- Napco Gemini 3200 12V Burg/Fire Panel**
- Napco Gemini 9600 12V Burg/Fire Panel**
- Silent Knight SK4224 24V FACP**

Contents

<i>Identifier Cross Reference List (Sorted by Identifier)</i>	4
<i>Identifier Cross Reference List (Sorted by Model Number)</i>	4
<i>Ademco</i>	5
<i>ADT Security Systems, Inc.</i>	5
<i>Advantor</i>	5
<i>Alison Control Inc.</i>	6
<i>Auth Company</i>	6
<i>Autocall Corporation, A Division of Thorn Automated Systems</i>	6
<i>Burle Industries</i>	7
<i>C & K Systems, Inc.</i>	7
<i>Cerberus Pyrotronics</i>	7
<i>Detection Systems, Inc.</i>	8
<i>Digital Monitoring Products, Inc. (DMP)</i>	8
<i>Digital Security Controls (DSC)</i>	9
<i>Edwards (Edwards Systems Technology)</i>	9
<i>Ellenco, Inc.</i>	10
<i>Faraday, Inc.</i>	10
<i>Federal Signal Corporation</i>	11
<i>Fire Burglary Instruments</i>	11
<i>Firecom, Inc.</i>	11
<i>Fire Control Instruments</i>	11
<i>Firelite</i>	11
<i>First Alert</i>	12
<i>Gamewell</i>	12
<i>GE Security (Aritech, Caddx, ESL, ITI, Moose)</i>	12
<i>Harrington Signal</i>	13
<i>Honeywell, Inc.</i>	13
<i>Johnson Controls, Inc.</i>	14
<i>Landis & GYR (MCC Powers)</i>	14
<i>Mirtone</i>	14
<i>Napco Security Systems</i>	15
<i>National Guardian</i>	15
<i>Notifier</i>	16
<i>Optex Morse, Inc.</i>	16
<i>Pem-All Fire Extinguisher Corporation</i>	16
<i>Potter Electric Signal Company</i>	16
<i>Protectowire Company</i>	16
<i>Radionics, Inc.</i>	17
<i>Safetech, Inc.</i>	17
<i>Scantronic (USA), Inc.</i>	17
<i>Security/Ameritech</i>	18
<i>Secutron</i>	18
<i>Silent Knight Security Systems</i>	18
<i>Spectronics Corporation</i>	18
<i>Thorn</i>	19
<i>Tyco (Simplex-Grinnel, Wormald)</i>	19
<i>Walter Kidde</i>	20
<i>Westec</i>	20

Identifier Cross Reference List (Sorted by Identifier)

ESL Detector Compatibility Identifier	ESL Base Compatibility Identifier	Detector Model Number	Compatible Base
S09A	NA	429AT	NA
		521B/BXT (SW 1 On)	NA
S10A	NA	429C	NA
		429CT	NA
		511C	NA
		521B/BXT (SW 1 Off)	NA
		521NB	NA
		521NBXT	NA
		521NCSXT	NA
S10A	S00	711U/UT	701E, 701U, 702E, 702U
S10A	S00	721U/UT	701E, 701U, 702E, 702UN
S11A	NA	429CRT	NA
		429CST	NA
S11A	NA	521CRXT	NA
		521NCRXT	NA
		521NCSRXT	NA
S11A	S00	731U	701U, 702E, 702RE, 702RU, 702U

Identifier Cross Reference List (Sorted by Model Number)

Detector Model Number	ESL Detector Compatibility Identifier	Compatible Base	ESL Base Compatibility Identifier
429AT	S09A	NA	NA
429C	S10A	NA	NA
429CT	S10A	NA	NA
429CRT	S11A	NA	NA
429CST	S11A	NA	NA
511C	S10A	NA	NA
521B/BXT (SW 1 On)	S09A	NA	NA
521B/BXT (SW 1 Off)	S10A	NA	NA
521CRXT	S11A	NA	NA
521NB/BXT	S10A	NA	NA
521NCSXT	S10A	NA	NA
521NCSRXT	S11A	NA	NA
521NCRXT	S11A	NA	NA
711U/UT	S10A	701U, 702E, 702U	S00
721U/UT	S10A	701U, 702E, 702U	S00
731U	S11A	701U, 702E, 702RE, 702RU, 702U	S00

Ademco

Control Unit Description	Loop Style	Control Unit ID #	Detectors Per Circuit	ESL Compatibility Identifier
4120EC	B	Household Fire	5	S09A
4140XM	B	Household Fire	10	S09A
4140XM Series (4140XMP, 4140XMPT, 4140XMPT-2)	B	Household Fire	20	S09A
5140XM Series	B	A	20	S09A
FOCUS 200 PLUS	B	A	10	S09A
Vista-15P	B	Household Fire	20	S09A
Vista-20/Vista-20P	B	Household Fire	20	S09A
Vista-40	B	Household Fire	20	S09A
Vista-50	B	Household Fire	20	S09A
Vista-50P/Vista-50PEN/Vista-50PUL	B	Household Fire	20	S09A
Vista-100	B	Household Fire	10	S09A

ADT Security Systems, Inc.

Control Unit Description	Loop Style	Control Unit ID #	Detectors Per Circuit	ESL Compatibility Identifier
4519-013, 4519-313	A	J1	10	S10A, S00
4520, Zone Model 4520-064	A	G1	10	S10A, S00
4520, Zone Model 4520-084	B	H1	13	S10A, S00
4520, Zone Model 4520-330 and/or Zone Model 4520-331	A	C1	15	S10A, S00
4520, Zone Model 4520-130	A	B1	15	S10A, S00
4520, Zone Model 4520-431	A	A1	15	S10A, S00
4520, Zone Model 4520-230	A	E1	15	S10A, S11A, S00
4520, Zone Model 4520-429 and/or Zone Model 4520-529	D	F1	10	S10A, S00
4520, Zone Model 4520-430 and/or Zone Model 4520-530	A	D1	10	S10A, S11A, S00
FOCUS 75	B	A	20	S09A
MCFAP-2Z3, 2Z6 w or w/o (-220), Zone Model BPAC or IDCA	D		20	S10A, S00
MCFAP-1Z1, 2Z1 w or w/o (-220)	B		20	S10A, S00
MCFAP-2Z3, 2Z6 w or w/o (-220), Zone Model w or w/o 2IDC	B		20	S10A, S00
Unimode 2 Control Unit	B, D	A	18	S10A, S00
Unimode 4-16, Zone Model IZ-4 and/or Zone Model IZ-4A and/or Zone Model IZ8	B, D	A	18	S10A, S00
Unimode 4-16/II, Zone Model IZ4;8 and/or IZM-8 Zone ID with or without IZE			20	
Unimode 5	B,D		20	S10A, S00
Unimode 10	B,D		20	S10A, S00
Unimode 200, Zone Model M302	B,D		24	S10A, S11A, S00
Safewatch P3000	B		20	S10A/S11A/S00

Advantor

Control Unit Description	Loop Style	Control Unit ID #	Detectors Per Circuit	ESL Compatibility Identifier
Advantage ULF-3000-24	A		16	S10A, S00

Alison Control, Inc.

<i>Control Unit Description</i>	<i>Loop Style</i>	<i>Control Unit ID #</i>	<i>Detectors Per Circuit</i>	<i>ESL Compatibility Identifier</i>
A888-MXXX, Zone Model 108800-2	B,D	002	25	S10A, S00
A888-MXXX, Zone Model 108800-2	B,D	002	50	S10, S00, S02

Aritech (see GE Security)

Auth Company

<i>Control Unit Description</i>	<i>Loop Style</i>	<i>Control Unit ID #</i>	<i>Detectors Per Circuit</i>	<i>ESL Compatibility Identifier</i>
AFC 100, Zone Model PCB 160	B	026	30	S10A, S11A, S00
AFC 100, Zone Model PCB 173	D	027	30	S10A, S11A, S00
AFC 100, Zone Model PCB 175	B	025	30	S10A, S11A, S00
AFC 400C, Zone Model SMD-2	B,D	024	30	S10A, S11A, S00

Autocall Corporation, A Division of Thorn Automated Systems

<i>Control Unit Description</i>	<i>Loop Style</i>	<i>Control Unit ID #</i>	<i>Detectors Per Circuit</i>	<i>ESL Compatibility Identifier</i>
AC- II, Zone Model 5130-074-21	D	01A	20	S10A, S11A, S00
AC- II, Zone Model 5200-522	B	01A	20	S10A, S11A, S00
AC- II, Zone Models 5130-106-10 or 5200-433	B	01A	30	S10A, S11A, S00
AC- II, Zone Model 5200-432	D	01A	30	S10A, S11A, S00
AC- II, Zone Model 5200-521	B	01A	12	S10A, S11A, S00
AC- II, Zone Model 5130-521	B	01A	12	S10A, S11A, S00
CD-NA, Zone Model 5200-432	D	01A	30	S10A, S11A, S00
CD-NA, Zone Model 5200-433	B	01A	30	S10A, S11A, S00
CD-TXA, Zone Model 5130-074-21	D	01A	20	S10A, S11A, S00
CD-TXA, Zone Model 5200-522	B	01A	20	S10A, S11A, S00
CD-TXA, Zone Model 5130-106-10 or 5200-433	B	01A	60	S10A, S11A, S00
CD-TXA, Zone Model 5200-432	D	01A	60	S10A, S11A, S0
CD-TXA, Zone Model 5200-521	B	01A	12	S10A, S11A, S00
CD-XA, Zone Model 5200-522	B	01A	20	S10A, S11A, S00
CD-XA, Zone Model 5130-074-21	D	01A	20	S10A, S11A, S00
CD-XA, Zone Model 5200-521	B	01A	12	S10A, S11A, S00
CD-XA, Zone Model 5130-106-10	B	01A	30	S10A, S11A, S00
CD-XA, 51200-433	B	01A	30	S10A, S11A, S00
CD-XA, Zone Model 5200-432	D	01A	30	S10A, S11A, S00
MDK, Zone Model 5130-044-02	B	01A	30	S10A, S11A, S00
MDK, Zone Model 5130-044-03	B	01A	30	S10A, S11A, S00
MDK, Zone Model 5130-106-10	B	01A	30	S10A, S11A, S00
MD2K, Zone Model 5130-044-02	B	01A	30	S10A, S11A, S00
MD2K, Zone Model 5130-044-03	B	01A	30	S10A, S11A, S00
MD2K, Zone Model 5130-106-10	B	01A	30	S10A, S11A, S00
MDK, Zone Model 5130-044-04	B	01A	30	S10A, S11A, S00

Autocall Corporation,
A Division of Thorn Automated Systems (continued)

Control Unit Description	Loop Style	Control Unit ID #	Detectors Per Circuit	ESL Compatibility Identifier
MDK, Zone Model 5130-044-05	B	01A	30	S10A, S11A, S00
MD2K, Zone Model 5130-044-04	D	01A	30	S10A, S11A, S00
MD2K, Zone Model 5130-044-05	D	01A	30	S10A, S11A, S00
MERLIN Control Unit, Zone Models 5130-106-10 or 5200-433	B	01A	30	S10A, S11A, S00
MERLIN Control Unit, Zone Models 5130-432 or 5200-432	D	01A	30	S10A, S11A, S00
MP400, Zone Model 5130-074-21	D	01A	20	S10A, S11A, S00
MP400, Zone Model 5130-106-10	B	01A	30	S10A, S11A, S00
MP400, Zone Model 5200-433	B	01A	30	S10A, S11A, S00
MP400, Zone Model 5200-432	D	01A	30	S10A, S11A, S00
MP400, Zone Model 5200-521	B	01A	12	S10A, S11A, S00
FIREQUEST 100-12	B	10112A	7	S10A, S00
FIREQUEST 200, Zone Model 2ZX	B,D	200A	22	S10A, S11A, S00
FIREQUEST 200, Zone Model 4ZX, 4ZXD or COMM CONT. REV. W	B	200A	22	S10A, S11A, S00
FIREQUEST 200, Zone Model U	B,D	200X	22	S10A, S11A, S00
FIREQUEST 200, Zone Model MASTER HALON	B,D	200A	22	S10A, S11A, S00
FIREQUEST 200, Zone Model VSD	B,D	200A	30	S10A, S11A, S00
FIREQUEST 300, Zone Model with or w/o DIB	B,D	F2		S10A, S11A, S00
K-101-24	B,D	10124A	30	S10A, S11A, S00
KDR-1000, Zone Model AIZ or AIZ-2	D	1000A	30	S10A, S11A, S00
KDR-1000, Zone Model BIZ-1, BIZ-2, BIZ-5	B	1000A	30	S10A, S11A, S00
KDR-1000, Zone Model DZM	B	1000B	30	S10A, S11A, S00
KDR-1000, Zone Model MIZP	B	1000C	30	S10A, S11A, S00

Burle Industries

All panels No 2-wire fire loops, use 4-wire models or ESL 505 2 to 4 wire converter module

C & K Systems (Inc.)

Control Unit Description	Loop Style	Control Unit ID #	Detectors Per Circuit	ESL Compatibility Identifier
SYS238 Series	B	Household Fire	12	S09A
SYS2316 Series	B	Household Fire	12	S09A

Cerberus Pyrotronics

Control Unit Description	Loop Style	Control Unit ID #	Detectors Per Circuit	ESL Compatibility Identifier
CP-2HR	A,B,D	CP-2HR	30	S10A, S11A, S00
CP-35	A,B,D	CP-35	30	S10A, S11A, S00
CP-35, Zone Model ZU-35	A,B,D	ZU-35	30	S10A, S11A, S00
CP-35, Zone Model ZU-35DS	A,B,D	ZU-35DS	30	S10A, S11A, S00
CP-35, Zone Model ZU-35TS	A,B,D	ZU-35TS	30	S10A, S11A, S00
CP-400	B	CP-400	30	S10A, S11A, S00
CP-400, Zone Model ZNE-404	B	ZN-404	30	S10A, S11A, S00





Cerberus Pyrotronics (Continued.)

Control Unit Description	Loop Style	Control Unit ID #	Detectors Per Circuit	ESL Compatibility Identifier
CP-400, Zone Model ZNE-404/S	B	ZNE404/S	30	S10A, S11A, S00
CP-400, Zone Model 405A	D	405A	30	S10A, S11A, S00
CTI-1, Zone Model 30774-02	B	30774-02	25	S10A, S11A, S00
CTI-1, Zone Model 30774-03	B	30774-03	25	S10A, S11A, S00
IXL with CZI-H2S	B	P/N-02, P/N-03	25	S10A, S00
IXL with CZI-H4S	D	P/N-01, 30774	25	S10A, S00
MX-316	A,B,D	MX-316	30	S10A, S11A, S00
MXL, with CZR-1, CZR-4	B,D	CZM-1 CZM-4	20 20	S10A, S00 S10A, S00
SXL with or without SZE-4R	B	Model No.	25	S10A, S00
XL-3, Zone Model ZNX-3	A,B,D	ZNX-3	30	S10A, S11A, S00

Detection Systems, Inc.

Control Unit Description	Loop Style	Control Unit ID #	Detectors Per Circuit	ESL Compatibility Identifier
D7024 Series with D7014/DS9411	D	B	20	S10A, S11A, S00
DS7090 Series	B	Household Fire	16	S09A
DS7090i Series; and DS7090TMi	B	B1	20	S10A, S00
DS7100 Series	B	B	16	S09A
DS7100 Series with DS7110	B	B1	16	S09A
DS7400 Series with DS7433	B	C	20	S10A
DS9400 Series with D7014/DS9411	D	B	20	S10A, S11A, S00

Digital Monitoring Products, Inc. (DMP)

Control Unit Description	Loop Style	Control Unit ID #	Detectors Per Circuit	ESL Compatibility Identifier
1512 control, Zone Model 715, or Zone 5	A	A	12	S09A
1812A, Zone Model 705	B	CI-1	10	S10A, S00
1812B, Zone Model 705	B	CI-1	10	S10A, S00
1812C, Zone Model 705	B	CI-1	10	S10A, S00
1812D, Zone Model 705	B	CI-1	10	S10A, S00
1812E, Zone Model 705	B	CI-1	10	S10A, S00
1912 control, Zone Model 715, or Zone 5	A	A	12	S09A
1912XR control, Zone Model 715, or Zone 5	A	A	12	S09A
XR5SL, Zone Model 2-5 on XR5SL control	 A	A	12	S09A
XR5FC, Zone Model 2-5 on XR5FC control	A	A	12	S09A
XR20, Zone Model 715, 715-8, 715-16 or zone 10 on XR20 control	 A	A	12	S09A
XR10, Zone Model 715, 715-8, 715-16 or zone 10 on XR10 control	 A	A	12	S09A
XR200, Zone Model 715, 715-8, 715-16 or zone 9 & 10 on XR200	 A	A	12	S09A

Digital Security Controls (DSC)

Control Unit Description	Loop Style	Control Unit ID #	Detectors Per Circuit	ESL Compatibility Identifier
4020CF	B		30	S09A
PC5010	B		15	S09A
PC4010CF	B	FM-1	30	S09A
PC4020CF	B	FM-1	30	S09A
PC5010 (Power 832)	B	PC5.1	30	S09A
PC1575	B	PC15.1	30	S09A

Edwards (Edwards Systems Technology)

Control Unit Description	Loop Style	Control Unit ID #	Detectors Per Circuit	ESL Compatibility Identifier
1211B	B,D	001	15	S10A, S11A, S00
1212B	B,D	001	15	S10A, S11A, S00
1214B	B	001	15	S10A, S11A, S00
2400 (2412, 2414, 2418) Zone Model 2400-2IDC (2400-2101)	B		20	S10A, S00
2400 (2412, 2414, 2418) Zone Model 2400-2BPA or 2400-IDCA (2400-2104, 2400-2105)	D		20	S10A, S00
5721B, Zone Model 5703B-105, or 5703B-405	D	001	20	S10A, S11A, S00
5721B, Zone Model 5703B-122, or 5703B-402, or 5703B-406	B	001	20	S10A, S11A, S00
5751B	B,D	001	20	S10A, S11A, S00
5752B, Zone Model 5750B-102	B	001	20	S10A, S11A, S00
5752B, Zone Model 5750B-105	D	001	20	S10A, S11A, S00
5753B, Zone Model 5750B-102	B	001	20	S10A, S11A, S00
5753B, Zone Model 5750B-105	D	001	20	S10A, S11A, S00
5754B	B	001	20	S10A, S11A, S00
5754B-2Z	B	001	20	S10A, S11A, S00
5756B	B, D	001	20	S10A, S11A, S00
5782B	B, D	001	20	S10A, S11A, S00
5800, Zone Model 5703-R2, 5703-R5	B, D	001	25	S10A, S11A, S00
6602-B201	B	660201	30	S10A, S11A, S00
6604-B201	B	660201	30	S10A, S11A, S00
6602-B201, Zone Model 6602-B102	D	660201	30	S10A, S11A, S00
6604-B201, Zone Model 6602-B102	D	660201	30	S10A, S11A, S00
6616, Zone Model 6616-301, or 6616-303	B	660201	18	S10A, S11A, S00
6616, Zone Model 6616-304	D	660201	18	S10A, S11A, S00
6632, Zone Model 6616-301, or 6616-303	B	660201	18	S10A, S11A, S00
6632, Zone Model 6616-304	D	660201	18	S10A, S11A, S00
8500, Zone Model 8501-X341, or 8501-X381	B	85001	20	S10A, S11A, S00
8500, Zone Model 8501-X342, or 8501-X382	D	85002	20	S10A, S11A, S00
8500, Zone Model 8501-X343, or 8501-X383	B	85003	20	S10A, S11A, S00
8570-ESAC, Zone Model 8572-X201	B	857001	30	S10A, S11A, S00
8570-ESAC, Zone Model 8572-X202	D	857002	30	S10A, S11A, S00
IRC-1, Zone Model 130022	B,D	5876	30	S10A, S11A, S00
IRC-3, Zone Model 130108 or 240113, or 240119	B	3289B	30	S10A, S11A, S00
IRC-3, Zone Model 130082	B,D	3289A	30	S10A, S11A, S00

Edwards (Edwards Systems Technology) (Continued)

Control Unit Description	Loop Style	Control Unit ID #	Detectors Per Circuit	ESL Compatibility Identifier
IRC-3, Zone Model 240205	B	5389	24	S10A, S11A, S00
LSS1, Zone Model 4CLA, 4ZEXP	B,D	0.0	30	S10A, S00
LSS4, Zone Model 4CLA, 4ZXPX	B,D	0.0	30	S10A, S00
LSS1/12, Zone Model 4CLA, 4ZEXP	B,D	0.0	30	S10A, S00
LSS4/12, Zone Model 4CLA, 4ZEXP	B,D	0.0	30	S10A, S00
RZB12-6MFC, Zone Model 240205	B	5389	24	S10A, S11A, S00

ESL (see GE Security)

Ellenco Inc.

Control Unit Description	Loop Style	Control Unit ID #	Detectors Per Circuit	ESL Compatibility Identifier
PMS, Zone Model MCP-1	B	ZEI-01	15	S10A, S00
PMS, Zone Model ZE-2A	B,D	ZEI-04	15	S10A, S00
PMSJR-1	B,D	ZEI-03	15	S10A, S00
PMSJR-2	B,D	ZEI-03	15	S10A, S00
ECP-2000, Zone Model 401310/401311/401312	B		30	S10A, S00

Faraday, Inc.

Control Unit Description	Loop Style	Control Unit ID #	Detectors Per Circuit	ESL Compatibility Identifier
FA200	B,D		30	S10A, S11A, S00
852	B	FOS1	30	S10A, S11A, S00
854	B	FOS1	30	S10A, S11A, S00
MPC-2000, Zone Model ZN-1,ZN2 and ZN-3	B,D	D	15	S10A, S00
7800, Zone Model 7836	B,D	B	40	S10A, S11A
12400	B	G	25	S10A, S00
12500, Zone Model 12503	B	M	30	S10A, S00
13200	B	F	30	S10A, S00
13400	B	G	30	S10A, S00
15108A, 15108B	B,D	A	30	S10A, S11A, S00
15108AL, 15108BL	B,D	FOS2	15	S10A, S11A, S00
15112A, 15112B	B,D	A	30	S10A, S11A, S00
15112AL, 15112BL	B,D	FOS2	15	S10A, S11A, S00
15116A, 15116B	B,D	A	30	S10A, S11A, S00
15116AL, 15116BL	B,D	FOS2	30	S10A, S11A, S00
15220A	B	C	30	S10A, S00
15240A	B	C	30	S10A, S00
19000A	B,D	B	30	S10A, S11A, S00
19000A, Zone Model 401126 or 401127	B,D	B	40	S10A, S11A, S00
19000A EVAC, Zone Model 401126	B,D	B	30	S10A, S11A, S00

Federal Signal Corporation

Control Unit Description	Loop Style	Control Unit ID #	Detectors Per Circuit	ESL Compatibility Identifier
Firearm 2000	B	CP01	25	S10A, S00
Firearm 3000	B	MF24A	30	S10A, S11A, S00
4000, Zone Model 5130-044-02 or 5130-044-03	B	01A	30	S10A, S11A, S00
4000, Zone Model 5130-044-04 or 5130-044-05	D	01A	30	S10A, S11A, S00
6000, Zone Model 5130-044-02 or 5130-044-03	B	01A	30	S10A, S11A, S00
6000, Zone Model 5130-044-04 or 5130-044-05	D	01A	30	S10A, S11A, S00
8000, Zone Model 5130-044-02 or 5130-044-03	B	01A	30	S10A, S11A, S00
8000, Zone Model 5130-044-04 or 5130-044-05	D	01A	30	S10A, S11A, S00

Fire Burglary Instruments (FBII)

All panels No 2-wire fire loops, use 4-wire models or ESL 505 2 to 4 wire converter module

Firecom, Inc.

Control Unit Description	Loop Style	Control Unit ID #	Detectors Per Circuit	ESL Compatability Identifier
8500, Zone Model 791A	D	021	15	S10A, S11A, S00
8500, Zone Model 791VA	D	022	15	S10A, S11A, S00
8500, Zone Model 791B	B	020	30	S10A, S11A, S00
8500, Zone Model 791VB	B	023	30	S10A, S11A, S00

Fire Control Instruments

Control Unit Description	Loop Style	Control Unit ID #	Detectors Per Circuit	ESL Compatibility Identifier
FC-72, Zone Model VZM	A,B	VZM01	25	S10A, S11A, S00
FC-72, Zone Model ZDM	A,B	ZDM01	25	S10A, S11A, S00
FC-72, Zone Model ZDM-D	A,B	ZDMD01	25	S10A, S11A, S00
FC-72, Zone Model VZM	D	VZM01Z	20	S10A, S11A, S00
FC-72, Zone Model ZDM	D	ZDMD01	20	S10A, S11A, S00
FC-72, Zone Model ZDM-D	D	ZDMD01	20	S10A, S11A, S00
FC-ID, Zone Model CPD-ID	A,B	CPDID-1	1	S10A, S11A, S00
FC-ID, Zone Model SLM	A,B	SLM01	10	S10A, S11A, S00
SBP-2, Zone Model SBP-2	A,B	SBP01	25	S10A, S11A, S00
SBP-4, Zone Model SBP-4	A,B	SBP01	25	S10A, S11A, S00

Firelite

Control Unit Description	Loop Style	Control Unit ID #	Detectors Per Circuit	ESL Compatibility Identifier
AE-1 or AE-2 with Zone Model ZAB	B,D	A	12	S10A, S11A, S00
MP-12	B	A	20	S10A, S00
MP-24	B	A	20	S10A, S11A, S00
MP-4424	B,D	A	20	S10A, S00
MRF-4424	B,D	A	20	S10A, S00
MS-124, MS-424	B	A	20	S10A, S11A, S00
MS-4024	B	A	20	S10A, S11A, S00

Firelite (Continued)

Control Unit Description	Loop Style	Control Unit ID #	Detectors Per Circuit	ESL Compatibility Identifier
MS-424A, Zone Model ANC-2B, CVC-2 or WFC	B,D	A	25	S10A, S11A, S00
MS-4412B	B	A	20	S10A, S00
MS-4424B	B,D	A	20	S10A, S00
MS-4824, Zone Model IZ424	B,D	A	20	S10A, S11A, S00
MS-5012	B	A	20	S10A, S00
MS-5024	B	A	20	S10A, S00
MS-5024UD: with or w/o CAC-10F	B,D	A	20	S10A, S00
MS-5210UD, Zone Model: with or w/o CAC-10F	B,D	A	20	S09A, S10A, S00, S11A,
MS-5224UD, Zone Model	B,D	A	20	S10A, S00
MS-9200, Zone Model M302	B,D	A	24	S09A, S10A, S00, S11A
Sensiscan 2000, Zone Model IZF-8 or IZE-A	B,D	A	30	S10A, S11A, S00
Sensiscan 2000, Zone Model IZ-8F, or IZE-AF, IZ-4F, IZ-4AF	B,D	A	20	S10A, S11A, S00
5000, Zone Model IZ-8F or IMZ-A	B,D	A	25	S10A, S11A, S00


First Alert

Control Unit Description	Loop Style	Control Unit ID #	Detectors Per Circuit	ESL Compatibility Identifier
FA200C	B	Household Fire	5	S09A, S10A, S11A
FA1200C	B	Household Fire	20	S09A, S10A, S11A
FA1500C	B	Household Fire	20	S09A, S10A, S11A

Gamewell

Control Unit Description	Loop Style	Control Unit ID #	Detectors Per Circuit	ESL Compatibility Identifier
FLEX 300, Zone Model Z2V	D	Z2V	25	S10A, S11A, S00
FLEX 300, Zone Model Z3A	D	Z3A	25	S10A, S11A, S00
FLEX 300, Zone Model Z4B	B	Z4B	25	S10A, S11A, S00
INS-2, Zone Model 30774-02, or 30774-03	B	Model No.	25	S10A, S11A, S00
ZANS 400, Zone Model Z1	B,D	30635	25	S10A, S11A, S00

GE Security

Control Unit Description	Loop Style	Control Unit ID #	Detectors Per Circuit	ESL Compatibility Identifier
Aritech - D 5000	B	D5000A	20	S09A, S10A, S00
Aritech - D3000, OEM 48	A		20	S09A, S10A, S00
ESL 1501, Zone Model BMB, VTW or ZEM	B,D	C01A	20	S10A, S11A, S00
ESL 1503, Zone Model BMB, VTW or ZEM	B,D	C01A	20	S10A, S11A, S00
ESL 1505, Zone Model BMB, VTW or ZEM	B,D	C01A	20	S10A, S11A, S00
ESL 1501, Zone Model BMB, VTW or ZEM	B,D	C01	20	S10A, S11A, S00
ESL 1503, Zone Model BMB, VTW or ZEM	B,D	C01	20	S10A, S11A, S00
ESL 1505, Zone Model BMB, VTW or ZEM	B,D	C01	20	S10A, S11A, S00
ESL 2500, Zone Model 2501 Zone 1	D	2500	20	S09A, S10A, S00
ESL 2500, Zone Model 2502-ZEM	 D	2500	20	S09A, S10A, S00

GE Security (Continued)

Control Unit Description	Loop Style	Control Unit ID #	Detectors Per Circuit	ESL Compatibility Identifier
ESL 2500, Zone Model 2504-ZEM	A	2500	20	S09A, S10A, S00
ESL 505, 2 to 4 wire Converter Module	 B		20	S09A, S10A, S11A, S00
Concord Hybrid, Zone Model 8Z Expander SnapCard 60-757 or 4A Input/2Z Output 60-756	A	60-734	10	S09A
Concord RF16, Zone Model 8Z Expander SnapCard 60-757 or 4A Input/2Z Output 60-756	A	60-792-95R-16Z	10	S09A
Concord RF32, Zone Model 8Z Expander SnapCard 60-757 or 4A Input/2Z Output 60-756	A	60-792-95R-32Z	10	S09A
Concord Commercial, Zone Model 8Z Expander SnapCard 60-757 or 4A Input/2Z Output 60-756	A	60-801	10	S09A
Concord Express, Zone Model 8Z SnapCard 60-757 or 4A Input/2Z Output 60-756	B	60-806-95R, 60-806	10	S09A
Concord Hybrid, Zone Model 8Z Expander with SnapCard 60-757 or IO 60-756 and with 60-S10A-MOD	A	60-734	10	S10A
Concord RF16, Zone Model 8Z Expander with SnapCard 60-757 or IO 60-756 and with 60-S10A-MOD	A	60-792-95R-16Z	10	S10A
Concord RF32, Zone Model 8Z Expander with SnapCard 60-757 or IO 60-756 and with 60-S10A-MOD	A	60-792-95R-32Z	10	S10A
Concord Commercial, Zone Model 8Z Expander with SnapCard 60-757 or IO 60-756 and with 60-S10A-MOD	A	60-801	10	S10A
Concord Express, Zone Model 8Z Expander with SnapCard 60-757 or IO 60-756 and with 60-S10A-MOD	B	60-806-95R, 60-806	10	S10A
Advent, Zone Model 60-757,60-758,60-756 or 60-767	 A	60-562	10	S09A
Advent, no Zone Models	 A	60-562	20	S09A
Advent w/ Zone Models 60-757,60-758, 60-756 or 60-767 and with 60-S10A-MOD	 A	60-562	10	S10A
Advent, no Zone Models with a 60-S10A-MOD	 A	60-562	20	S10A
Moose - Z1200	B	Z1200A	20	S09A, S10A, S00
Moose - Z2000	B	Z2000A	20	S09A, S10A, S00
Moose - Z1250	A	Z1250	20	S09A, S10A, S00
Moose - ZX200/210	A	ZX200/210	10	S09A, S10A, S00
Moose - ZS300/310	A	ZX300/310	10	S09A, S10A, S00
Moose - Z2000, Model Z2000, Z1200	A	ZX2000	20	S09A, S10A, S00
Moose - ZX400/410	A	ZX400/410	20	S09A, S10A, S00
Moose - Model ZXEXP	A		10	S09A, S10A, S00
NetworX NX-4	B	3800-0001	20	S09A
NetworX NX-6	B	3800-0001	20	S09A
NetworX NX-8 & NX-8-CF	B	3800-0001	20	S09A
NetworX NX-8E	B	3800-0001	20	S09A
NetworX 8900 EUL	B	3800-0001	20	S09A

Harrington Signal

Control Unit Description	Loop Style	Control Unit ID #	Detectors Per Circuit	ESL Compatibility Identifier
HS-2200	B,D		25	S10A
HS-2400	B,D		25	S10A
HS-3000B, with 2BI, 4BI, BIN, BX, BXIN	B		30	S10A
HS-3000V, with 2BI, 4BI, BIN, BX, BXIN	B		30	S10A

Honeywell, Inc.

Control Unit Description	Loop Style	Control Unit ID #	Detectors Per Circuit	ESL Compatibility Identifier
DELTANET F&S, Zone Model AA	A,B,C	001	25	S10A, S11A, S00
DELTANET F&S, Zone Model AB	D,E	001	25	S10A, S11A, S00
SENTARA 324, Zone Model W1065A	A,B,C	006	20	S10A, S11A, S00
SENTARA 324, Zone Model W1065A	D,E	006	20	S10A, S11A, S00
5900 Series	A	A	12	S09A
7000 Series	B	7K8	10	S09A

ITI (see GE Security)

Johnson Controls, Inc.

Control Unit Description	Loop Style	Control Unit ID #	Detectors Per Circuit	ESL Compatibility Identifier
MULTIPLY 5000, Zone Model VZM	D	VZM01	25	S10A, S11A, S00
MULTIPLY 5000, Zone Model ZDM	D	ZDM01	25	S10A, S11A, S00
MULTIPLY 5000, Zone Model ZDM-D	D	ZDM01	25	S10A, S11A, S00
MULTIPLY 5000, Zone Model VZM	A,B	VZM01	20	S10A, S11A, S00
MULTIPLY 5000, Zone Model ZDM	A,B	ZDM01	20	S10A, S11A, S00
MULTIPLY 5000, Zone Model ZDM-D	A,B	ZDM01	20	S10A, S11A, S00
SYSTEM 5000, Zone Model VZM	D	VZM01	20	S10A, S11A, S00
SYSTEM 5000, Zone Model ZDM	D	ZDM01	20	S10A, S11A, S00
SYSTEM 5000, Zone Model ZDM-D	D	ZDM01	20	S10A, S11A, S00
SYSTEM 5000, Zone Model VZM	A,B	VZM01	25	S10A, S11A, S00
SYSTEM 5000, Zone Model ZDM	A,B	ZDM01	25	S10A, S11A, S00
SYSTEM 5000, Zone Model ZDM-D	A,B	ZDM01	25	S10A, S11A, S00

Landis & GYR (MCC Powers)

Control Unit Description	Loop Style	Control Unit ID #	Detectors Per Circuit	ESL Compatibility Identifier
SYSTEM 600/FMS, Zone RCU/533-150	B,D	533150	18	S10A, S11A, S00

Mirtone


Control Unit Description	Loop Style	Control Unit ID #	Detectors Per Circuit	ESL Compatibility Identifier
7100, or 7112	B	A	30	S10A, S11A, S00
7200	B	A	30	S10A, S11A, S00
7200, Zone Model 7230	D	A	30	S10A, S11A, S00
7600, or 7800	B	A	30	S10A, S11A, S00
7600, Zone Model 7602	B	A	30	S10A, S11A, S00
7600, Zone Model 7630 or 7640	D	A	30	S10A, S11A, S00
7800, Zone Model 7602	B	A	30	S10A, S11A, S00
7800, Zone Model 7630 or 7640	D	A	30	S10A, S11A, S00
7900, Zone Models 79045-2, or 79045A-2TA	B	A	13	S10A, S00
7900, Zone Model 79044A	D	A	13	S10A, S00
79002U, Zone Model 79096U-2, 79045-21A, 79110, 79110D, 79111	B	A	30	S10A, S11A, S00

Mirtone (Continued)

Control Unit Description	Loop Style	Control Unit ID #	Detectors Per Circuit	ESL Compatibility Identifier
79008U, Zone Model 79096U-2, 79045-21A, 79110, 79110D, 79111	B	A	30	S10A, S11A, S00
79029, Zone Model 79096U-2, 79045-21A, 79110, 79110D, or 79111	B	A	30	S10A, S11A, S00
79030, Zone Model 79096U-2, 79045-21A, 79110, 79110D, or 79111	B	A	30	S10A, S11A, S00
79096U, Zone Model 79096U-2, 79045-21A, 79110, 79110D, or 79111	B	A	30	S10A, S11A, S00
79500, Zone Model 79096U-2, 79045-21A, 79110, 79110D, or 79111	B	A	30	S10A, S11A, S00
79500U-CA, Zone Model 79096U-2, 79045-21A, 79110, 79110D, or 79111	B	A	30	S10A, S11A, S00
8000, Zone Models 8070, 8071, 8072, 8073, 8070A, 8071A, 8072A, 8073A	B	A	30	S10A, S11A, S00
8000, Zone Models 7630 or 7640	D	A	30	S10A, S11A, S00
9200, Zone Models 8070, 8071, 8072, 8073, 8070A, 8071A, 8072A, 8073A	B	A	30	S10A, S11A, S00
9200, Zone Models 7630 or 7640	D	A	30	S10A, S11A, S00
9200 Remote, Zone Models 7630, or 7640	D	B	30	S10A, S11A, S00
9200 Remote, Zone Models 8070, 8071, 8072, 8073, 8070A, 8071A, 8072A, or 8073A	B	A	30	S10A, S11A, S00
9500, Zone Models 7630, or 7640	D	B	13	S10A, S11A, S00
9500, Zone Models 8070, 8071, 8072, 8073, 8070A, 8071A, 8072A, or 8073A	B	A	13	S10A, S11A, S00

Moose (see GE Security)

Napco Security Systems

Control Unit Description	Loop Style	Control Unit ID #	Detectors Per Circuit	ESL Compatibility Identifier
MA-1000 Series	B	Household Fire	10	S09A
MA-1008 Series	B	Household Fire	10	S09A
MA-1010 Series	B	Household Fire	10	S09A
MA-1016 Series	B	Household Fire	10	S09A
MA3000 SERIES	B	MA3000A and MA3000B	10	S10A, S00
MFA-6012, Zone Model with or without CA6000	B,D	MF12A	10	S09A
MFA-6024 Series, Zone Model with or without CA6000	B,D	MF24A	30	S10A, S11A, S00
S5500 SERIES	B	S5000A and S5000B	10	S10A, S00
Gem-P3200	 B	GEM-PS	10	S09A
Gem-P9600		GEM-PS	10	S09A

National Guardian

Control Unit Description	Loop Style	Control Unit ID #	Detectors Per Circuit	ESL Compatibility Identifier
CONTROLINK 5200, Zone Models ZN-1, ZN-2, ZN-3	B, D	D	15	S10A, S00
3100 Series, Zone Model 7433	B	C	20	S10A, S00

NetworX (see GE Security)

Notifier

Control Unit Description	Loop Style	Control Unit ID #	Detectors Per Circuit	ESL Compatibility Identifier
AFC-90, Zone IZA424	B,D	A	20	S10A, S00
AFM-200, Zone Model IMMX-2, or M3-TW	B,D	A	25	S10A, S00
AFP-1010, Zone Model IMMX-2, or M3-TW	B,D	A	25	S10A, S00
AFP-200, Zone Model IMMX-2, or M3-TW	B,D	A	25	S10A, S00
AM-2020, Zone Model IMMX-2, or M3-TW	B,D	A	25	S10A, S00
SFP-2, SFP-4, SFP-6 & SFP-8	B,D	A	24	S10A, S11A, S00
SFP-400	B,D	A	25	S10A, S00
SGL-1000, SGL-4000	B	A	24	S10A, S11A, S00
System 500, Zone Model IZ-8F, or IZ-4F, IZE-AF, IZ-4AF	B,D	A	20	S10A, S00
S500, Zone Model IZM-8 or IZE-A	B,D	A	30	S10A, S11A, S00
S5000 or S500, Zone Model IZM-8 or IZE-A	B,D	A	30	S10A, S11A, S00
XP Transponder, Zone Model XPM-8	B,D	A	40	S10A, S00
4800, Zone Model 2Z2W-A or 4Z2W-B	B	A	24	S10A, S11A, S00
4885, Zone Model 2Z2W-A or 4Z2W-B	B	A	24	S10A, S11A, S00

Optex Morse, Inc.

Control Unit Description	Loop Style	Control Unit ID #	Detectors Per Circuit	ESL Compatibility Identifier
G824 Series	B	5000-0408	10	S10A, S00
MDC Series	No 2-wire fire loops, use 4-wire models or ESL 505 2 to 4 wire converter module			

Pem-All Fire Extinguisher Corporation

Control Unit Description	Loop Style	Control Unit ID #	Detectors Per Circuit	ESL Compatibility Identifier
PEM-5000, Zone Model IMZ-8, IZE-A	B,D	A	30	S10A, S11A, S00

Potter Electric Signal Company

Control Unit Description	Loop Style	Control Unit ID #	Detectors Per Circuit	ESL Compatibility Identifier
PFC 100	B	A	15	S10A, S00
PFC 100R, PFC-2000, PFC-4000	B,D	A	25	S10A, S00
PFC 2000R	B,D	A	20	S10A, S00
System One/15, Zone Model BAIN, BAIXN, BBIN, BBIXN, BZAI, BZAIX, BZN-2IAX, BZBI, BZBIX	B,D	PNV	30	S10A, S00
System One/15, Zone Model VAIN, VAIXN, VBIN, VBIXN, VZAI, VZAIX, VZBI, BZBIX, VZN-2IAX	D	PV	30	S10A, S00


Protectowire Company

Control Unit Description	Loop Style	Control Unit ID #	Detectors Per Circuit	ESL Compatibility Identifier
ACR-1600, Zone Model ZM-2200	A,D	ZM-2200	10	S10A, S11A, S00

Radionics, Inc.

Control Unit Description	Loop Style	Control Unit ID #	Detectors Per Circuit	ESL Compatibility Identifier
D2012, Zone 1	A		10	S11A
D2012U, Zone 1	A		10	S11A
D2112 with or w/o D125B	A	A	5	S09A, S10A, S11A
D2112-01			10	S09A, S10A, S11A
D2212	B		5	S09A
D2212B, Zone 1	A		10	S11A
D2412, Zone 1	A		10	S11A
D2412U, Zone 1	A		10	S11A
D2412EU	A		10	S11A
D2812	A	A/B	5/15	S09A, S10A, S11A
D2812U, Zone 1	A		10	S11A
D4112	A	B	12	S09A
D6112	A	B	12	S09A
D7112, Zone Model D125, or D125B (12V)	A	A	12	S09A
D7112, Zone Model D125B (24V)	A	A	48	S10A, S00
D7212, Zone Model D125, or D125B (12V)	A	A	12	S09A
D7212, Zone Model D125B (24V)	A	A	48	S10A, S00
D8112, Zone Model D125, or D125B (12V)	A	A	12	S09A
D8112, Zone Model D125B (24V)	A	A	48	S10A, S00
D9112, Zone Model D125, or D125B (12V)	A	A	12	S09A
D9112, Zone Model D125B (24V)	A	A	48	S10A, S00
D9412 with or w/o D125B				S0
DS2212B	A	A	10	S10A, S11A
D7412				

Safetech, Inc.

Control Unit Description	Loop Style	Control Unit ID #	Detectors Per Circuit	ESL Compatibility Identifier
S1000	B,D		40	S10A, S11A, S00
S1005	B		40	S10A
S1010	B		40	S10A
S2000, Zone Model CCA-1, CCA-3, or DZM	B,D	CO2	40	S10A, S11A, S00
S2000, Zone Model DZS	B,D	CO2A	40	S10A, S11A, S00
S3000	 B,D		40	S10A, S11A, S00

Scantronic (USA), INC.

Control Unit Description	Loop Style	Control Unit ID #	Detectors Per Circuit	ESL Compatibility Identifier
AV9000 Series, Zone FM2000	B	Household Fire	20	S09A
EL8, Zone FM2000	B	Household Fire	20	S09A
EL16, Zone FM2000	B	Household Fire	20	S09A
SC1600 Series, Zone FM2000	B	Household Fire	20	S09A
SC8000 Series, Zone FM2000	B	Household Fire	20	S09A


Securitylink/Ameritech

<i>Control Unit Description</i>	<i>Loop Style</i>	<i>Control Unit ID #</i>	<i>Detectors Per Circuit</i>	<i>ESL Compatibility Identifier</i>
AM-100	B	Household Fire	20	S09A
SL 150	B	Household Fire	20	S09A

Secutron

<i>Control Unit Description</i>	<i>Loop Style</i>	<i>Control Unit ID #</i>	<i>Detectors Per Circuit</i>	<i>ESL Compatibility Identifier</i>
MR-2900, with MR-2928 or 2938	B,D		40	S10A, S11A

Silent Knight Security Systems

<i>Control Unit Description</i>	<i>Loop Style</i>	<i>Control Unit ID #</i>	<i>Detectors Per Circuit</i>	<i>ESL Compatibility Identifier</i>
2820, Zone Model 7181	A	B	10	S10A, S00
4720, Zone Model 7181	A	B	10	S10A, S00
5104, Zone Model 7181	A	B	10	S10A, S00
5107, Zone Model 7181	A	B	10	S10A, S00
5204 (12V)	A	12C	12	S10A, S00
5204 (12V)	A	12C	15	S11A
5204 (24V)	A	24C	15	S10A, S00
5204 (24V)	A	24C	15	S11A
5207, Zone Model 7181	A	B	10	S10A, S00
5207 (12V)	A	12D	15	S10A, S00
5207 (24V)	A	24D	20	S10A, S00
5207, Zone Model 5210	B	24A	10	S10A, S11A, S00
5208 w/5217 Zone Expander	B,D	24F	40	S10A, S11A
C6000	A	24EE	25	S09A, S10A, S11A, S00
C6000	B	24EE	25	S09A, S10A, S11A, S00
SK2224	B	24F	40	S09A, S10A, S11A, S00
SK4224	 B,D	24FF	30	S11A, S10A
SK6324	B	24F	30	S10A, S11A

Simplex-Grinnell (See Tyco)

Spectronics Corporation

<i>Control Unit Description</i>	<i>Loop Style</i>	<i>Control Unit ID #</i>	<i>Detectors Per Circuit</i>	<i>ESL Compatibility Identifier</i>
320 or 324 Zone Model 320/LC/OS-24	B	Model #	12	S10A, S00
624/MX, Zone Model ADS or MX/OSRP	B	Model #	12	S10A, S00
624/MX, Zone Model MX/OSH or MX/IO-10H	B	Model #	20	S10A, S11A, S00
624/MX, Zone Model MX/IO-10	B,D	Model #	10	S10A, S11A, S00
640 or 641, Zone Model MX8/WIB, OSS, S2	B	Model #	12	S10A, S00
640 or 641, Zone Model S2A	D	Model #	12	S10A, S11A,
640 or 641, Zone Model MX8/WIBH or S2W	B	Model #	20	S10A, S00
640 or 641, Zone Model S2WA	D	Model #	20	S10A, S11A, S00
FASA, Zone Model FASA	B,D	Model #	20	S10A, S11A, S00

Thorn Automated Systems

Control Unit Description	Loop Style	Control Unit ID #	Detectors Per Circuit	ESL Compatibility Identifier
FIREQUEST 100-12	B	10112A	7	S10A, S00
FIREQUEST 100-24	B,D	10124A	30	S10A, S00
FIREQUEST 200, Zone Model 2ZX	B,D	200A	22	S10A, S11A, S00
FIREQUEST 200, Zone Model 4ZX, 4ZXD or COMM CONT REV. W	B	200A	22	S10A, S11A, S00
FIREQUEST 200, Zone Model U	B,D	200X	22	S10A, S11A, S00
FIREQUEST 200, Zone Model MASTER HALON	B,D	200A	22	S10A, S11A, S00
FIREQUEST 200, Zone Model VSD	B,D	200A	30	S10A, S11A, S00
FIREQUEST 300	B,D	F2	20	S10A, S11A, S09A
K-101-24	B,D	10124A	30	S10A, S11A, S00
KDR-1000, Zone Model AIZ or AIZ-2	D	1000A	30	S10A, S11A, S00
KDR-1000, Zone Model BIZ, BIZ-2, BIZ-5	B	1000A	30	S10A, S11A, S00
KDR-1000, Zone Model DZM	B	1000B	30	S10A, S11A, S00
KDR-1000, Zone Model MIZP	B	1000C	30	S10A, S11A, S00

Tyco

Control Unit Description	Loop Style	Control Unit ID #	Detectors Per Circuit	ESL Compatibility Identifier
Simplex 2001-8001, Zone Model 2001-1017 or 2001-1019	B	Model #	15	S10A
Simplex 2001-8001, Zone Model 2001-1018 or 2001-1020 or 2001-1027	D	Model #	15	S10A
Simplex 2001-8005, Zone Model 2001-1017 or 2001-1019	B	Model #	15	S10A
Simplex 2001-8005, Zone Model 2001-1020 or 2001-1027	D	Model #	15	S10A
Simplex 2120, Zone Models 2120-0523, 2120-0535, 2120-7011 with 2120-0117 2120-7012 with 2120-0117, 2120-7013 with 2120-0117 2120-7014 with 2120-0117, 2120-7015 with 2120-0117 2120-7019 with 2120-0117, 2120-7022 with 2120-0117 2120-7023 with 2120-0117, 2120-7024 with 2120-0117	B	Model #	30	S10A, S11A,
Simplex 2120, Zone Models 2120-7031 with 2120-0117 2120-7032 with 2120-0117	D	Model #	30	S10A, S11A,
Simplex 2120, Zone Models 2120-7031 with 2120-7033 with 2120-0117 Zone Models, 2120-7806, 2190-9144, 2190-9145, 2190-9153, 2190-9154	D	Model #	30	S10A, S11A,
Simplex 4001-9403, Zone Model 4001-9403 or Simplex 4001-9403, Zone Model 4001-9813	B,D	Model #	15	S10A
Simplex 4001-9404, Zone Model 4001-9404 or Simplex 4001-9813, Zone Model 4001-9813	B,D	Model #	30	S10A, S11A,
Simplex 4002, Zone Model 4002-5001, 4002-5002 or 4002-7001	B,D	Model #	15	S10A
Simplex 4002, Zone Model 4002-5003, 4002-5004 or 4002-7002	B,D	Model #	15	S10A
Simplex 4100, Zone Model 4100-5001, 4100-5002, 4100-7001 or 4100-7002	B,D	Model #	30	S10A, S11A,
Simplex 4100, Zone Model 4100-5011, 4100-5012, 4100-7011	B,D	Model #	30	S10A, S11A,
Wormald Autopulse 1000	B	SZB1	50	S10A, S11A

Tyco (Continued)

Control Unit Description	Loop Style	Control Unit ID #	Detectors Per Circuit	ESL Compatibility Identifier
Wormald Autopulse 2000	B	M6B1	50	S10A, S11A, S00
Wormald Autopulse 2000	D	M6D1	50	S10A, S11A, S00
Wormald Autopulse 3000	B	M6B1	50	S10A, S11A, S00
Wormald Autopulse 3000	D	M6D1	50	S10A, S11A, S00
Wormald Autopulse 4000	B	M20B1	50	S10A, S11A, S00
Wormald Autopulse 4000	D	M20D1	50	S10A, S11A, S00
Multizone 6P	B	M6B1	50	S10A, S11A, S00
Multizone 6P	D	M6D1	50	S10A, S11A, S00
Multizone 20M	B	M20B1	50	S10A, S11A, S00
Multizone 20M	D	M20D1	50	S10A, S11A, S00
Multizone 20P	B	M20B1	50	S10A, S11A, S00
Multizone 20P	D	M20D1	50	S10A, S11A, S00

Walter Kidde

Control Unit Description	Loop Style	Control Unit ID #	Detectors Per Circuit	ESL Compatibility Identifier
295100, Zone Model MIZP	B,D	10124A	30	S10A, S11A, S00
295101, Zone Model MIZP	B,D	10124A	30	S10A, S11A, S00

Westec

Control Unit Description	Loop Style	Control Unit ID #	Detectors Per Circuit	ESL Compatibility Identifier
MS-5000 Zone Model with or w/o MS5041/MS5042	A	W	10	S10A,S11A,S00

Wormald US, Inc. (See Tyco)